

Public Fishing Rights Areas
 (Bank designations are as you are looking downstream)

- Right
- Left
- Both
- Footpath
- P Angler Parking

- Roads
- Streams
- Railroads
- Town, Village, City
- DEC Lands
- County Recreational Land

0 0.2 0.4 0.6 Miles

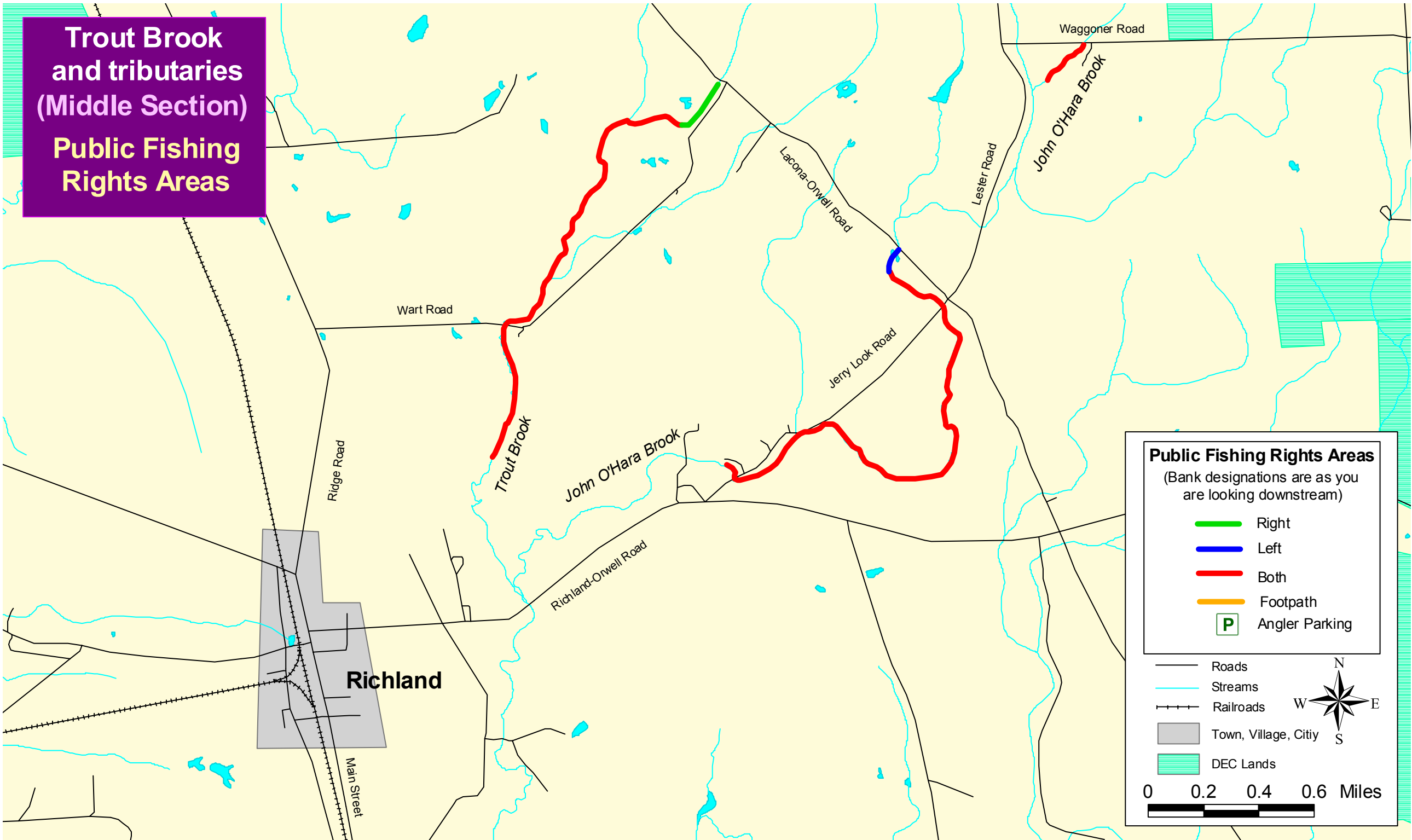
**Salmon River
 and
 Lower Trout Brook
 (Lower Section)
 Public Fishing
 Rights Areas**

**Sportsman's Pool
 North**

**Sportsman's Pool
 South**

Pineville

**Trout Brook and tributaries
(Middle Section)
Public Fishing Rights Areas**



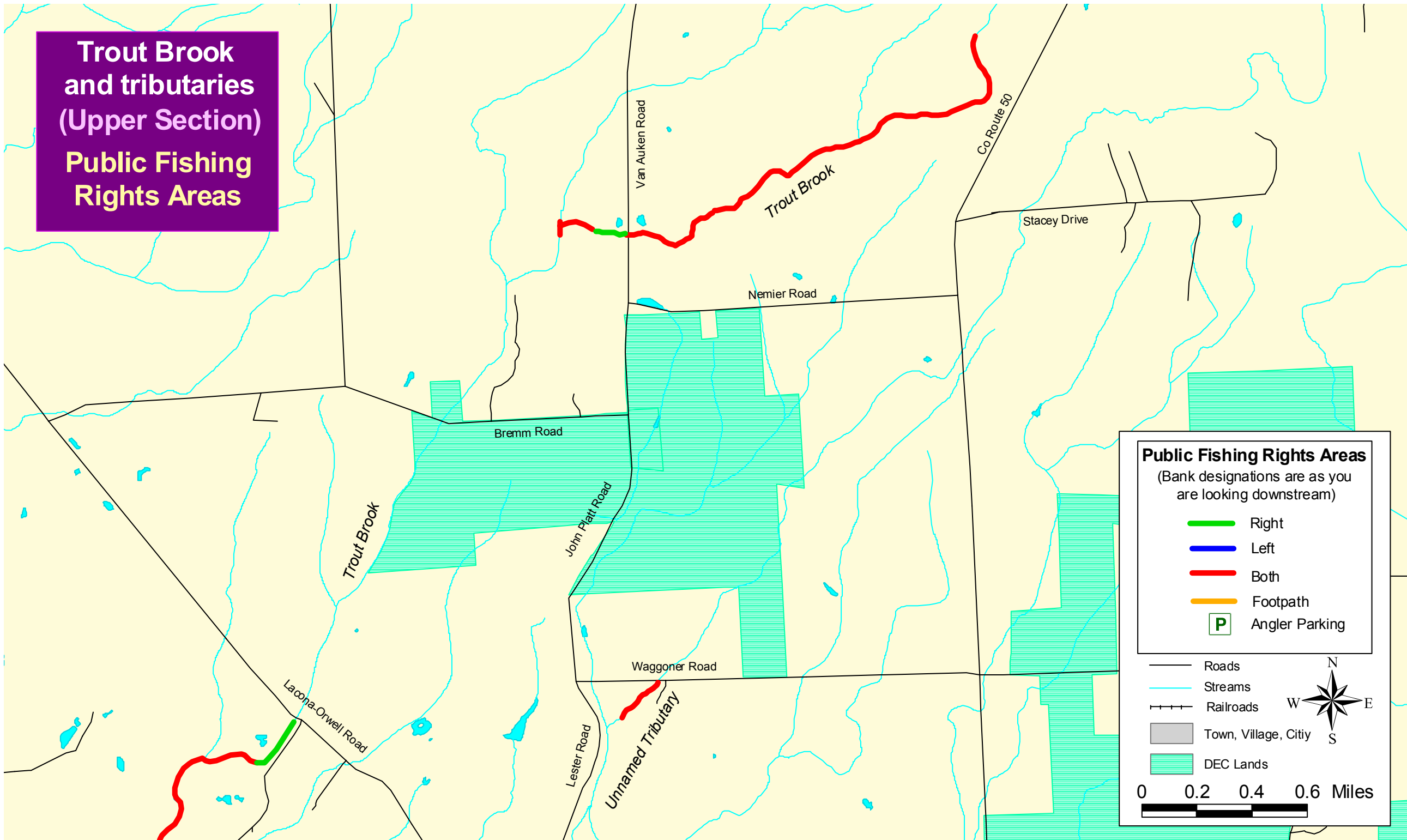
Public Fishing Rights Areas
(Bank designations are as you are looking downstream)

- Right
- Left
- Both
- Footpath
- Angler Parking

Roads
Streams
Railroads
Town, Village, City
DEC Lands

0 0.2 0.4 0.6 Miles

**Trout Brook and tributaries
(Upper Section)
Public Fishing Rights Areas**



Public Fishing Rights Areas

(Bank designations are as you are looking downstream)

-  Right
-  Left
-  Both
-  Footpath
-  Angler Parking

— Roads

— Streams

— Railroads

— Town, Village, City

— DEC Lands

0 0.2 0.4 0.6 Miles

